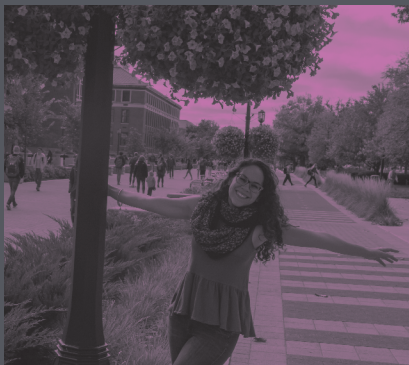


ANNUAL

REPORT

2018

WOMEN
IN ENGINEERING PROGRAM



design life.*engineer.*

FROM THE DIRECTOR



Beth M. Holloway, PhD

Assistant Dean for Diversity and Engagement

Leah H. Jamieson Director of Women in Engineering

Assistant Professor, Mechanical Engineering (by courtesy)
College of Engineering

Welcome to the 2018 edition of the Women in Engineering Program Annual Report. I am happy to present you with the results of another year of accomplishments, connections, and partnerships. Our successes are directly attributable to those who support us and partner with us, and for that we are ever grateful.

Looking ahead, 2019 will be an exciting year on campus. Purdue University is celebrating a yearlong commemoration of its 150th Anniversary, and the Women in Engineering Program is celebrating its 50th Anniversary. See page 20 for more information and a Save the Date! I am hopeful that many of you will be able to join us.

As fun as it is to look towards the future, this is also a good time to reflect on the past. This and past annual reports are a great snapshot of enrollments by year, but don't give information about enrollment trends. I'm excited to report that the number of women undergraduates in engineering has increased 84% in the last 10 years, and the number of women in the new beginner engineering class has increased 62% in the last 5 years. These increases are a result of significant hard work by the staff in the Women in Engineering Program and many, many other units in the College of Engineering and at Purdue in general. We are happy to be able to collaborate with so many partners that have made growth like this possible.

As always, I'm eager to hear your comments and feedback.

Beth M. Holloway

TABLE OF CONTENTS

01

**MISSION AND
OBJECTIVES**

02

BUDGET

03

**OUTREACH
ACTIVITIES**

04

**OUTREACH FEATURE:
ENGINEERING FOR YOUR
IMAGINATION (FYI)**

05

**UNDERGRADUATE
STUDENT FEATURE:
EMMY CHOJECKI**

06

**UNDERGRADUATE
STUDENT FEATURE:
ABHI MISHRA**

07

**RECRUITING ACTIVITY
FEATURE: WE LINK**

09

**UNDERGRADUATE
AND GRADUATE
RETENTION ACTIVITIES**

11

**GRADUATE
STUDENT FEATURE:
NEYLAN LOPEZ-PEREZ**

12

**PROGRAM FEATURE:
M&M: MENTEES & MENTORS,
UNDERGRADUATE MENTORING
PROGRAM**

13

INDIVIDUAL DONATIONS

18

ENDOWMENTS

19

**CORPORATE AND
FOUNDATION SUPPORT**

20

**WOMEN IN ENGINEERING
PROGRAM 50TH
ANNIVERSARY CELEBRATION**

Since 1969, Purdue's Women in Engineering Program has been committed to increasing the recruitment, retention, and graduation of women engineering students. Each year, we reach out to support and inform more than 4,000 girls and young women — from elementary school through graduate school. Following is a brief review of our individual programs for 2017-18, with a spotlight on three of our programs: Engineering For Your Imagination; WE Link; and the M&M: Mentees & Mentors, Undergraduate Mentoring Program.

MISSION:

The Women in Engineering Program at Purdue University is dedicated to enriching the profession of engineering through the full participation of women. We develop and direct activities that provide:

- encouragement for girls and young women to study engineering,
- information about careers and companies, and
- an environment conducive to the successful completion of students' studies.

We also strive to maintain strong relationships with alumnae, friends, corporations, and foundations who generously support our program.

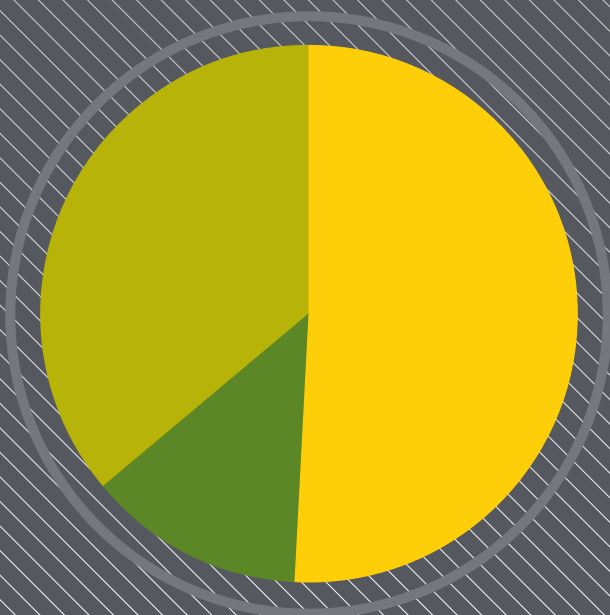
OBJECTIVES:

- To provide career information and encouragement to pre-college girls and young women to continue achievement in math and science and consider engineering as an appropriate career choice.
- Encourage women to matriculate at Purdue University in the College of Engineering.
- Ensure a climate in the College of Engineering that allows young women to reach their full potential.
- Provide opportunities for women engineering students to develop leadership skills that can be utilized in their future lives.
- Encourage women to consider graduate education and academia among their options upon graduation.
- Maintain open communication with alumnae and their employers to encourage their continued participation in and support of the Women in Engineering Program.

ENROLLMENT OF WOMEN IN ENGINEERING FALL 2017

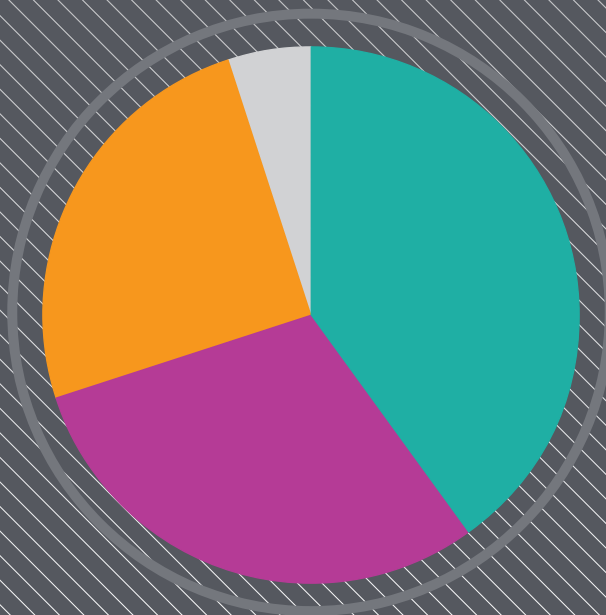
UNDERGRADUATE	% WOMEN
Aero & Astro	13%
Ag & Bio	49%
Biomedical	44%
Chemical	36%
Civil	27%
Construction	24%
Elect. & Computer	15%
Envir. & Ecological	56%
First Year	27%
Industrial	31%
Inter/Multidisciplinary	45%
Materials	35%
Mechanical	16%
Nuclear	21%
Total	25%

GRADUATE	% WOMEN
Aero & Astro	17%
Ag & Bio	41%
Biomedical	47%
Chemical	27%
Civil	30%
Elect. & Computer	18%
Envir. & Ecological	54%
Engr. Education	54%
Industrial	29%
Interdisciplinary	24%
Materials	34%
Mechanical	15%
Nuclear	21%
Total	24%



INCOME 2017-18

University Funds	51%
Corporate Gifts	13%
Alums and Friends	36%



EXPENSES 2017-18

Pre-College Outreach	40%
Retention	30%
Recruiting	25%
Program Administration	5%



THE CAMPAIGN FOR PURDUE UNIVERSITY

The Women in Engineering Program could not achieve its mission to enrich the profession of engineering through the full participation of women without the generous support of our donors. We are taking part in ***Ever True: The Campaign for Purdue University*** capital campaign. The campaign is an exciting endeavor with transformative potential and is made possible both by the generosity of our alums and friends and by the commitment of our faculty, staff, and students. If you would like to make a contribution, please go to giving.purdue.edu or contact Claire Chandler at 765.494.6383 or cechandler@prf.org.



› ACCESS ENGINEERING

Access Engineering is a community engagement initiative within WIEP, where we partner with local programs that host students in K-8th grade summer residential or day camps. Current undergraduate and graduate students bring hands-on engineering activities to campers, discuss engineering in an engaging and relevant way, facilitate the activities, and serve as role models. This year, pre-service teachers were hired as team coordinators; this increased their confidence in teaching engineering principles. Approximately 1,500 pre-college students participated in these activities; 56% were girls and 29% were minorities underrepresented in engineering.

Sponsored this year by the Motorola Solutions Foundation, the Halliburton Foundation, the Martinson Family Foundation, and the Triumph Group Foundation.

› IMAGINATION, INNOVATION, DISCOVERY, AND DESIGN (I2D2)

The Imagination, Innovation, Discovery, and Design (I2D2) program is an after-school academic year program for students in 1st-6th grade. This exposure to engineering disciplines at a formative age helps to increase the potential that students consider engineering. WIEP partners with several existing afterschool programs in the Greater Lafayette community to bring our role models and activities to 21 afterschool program sites. We have expanded to include weekend events as well as evening events at the invitation of area schools, Girl Scouts, and other state-wide events which engage both parents and their children. The activities give 1st-6th grade students the opportunity to work together, solve problems, test prototypes, and redesign for better solutions. These activities allow the students to explore each field of engineering and to determine where their interests lie. Each year, over 45 trained female engineering student role models in I2D2 engage over 1,100 participants in hands-on activities designed to show the creativity, teamwork, and social relevance of an engineering career.

Sponsored this year by the Motorola Solutions Foundation, the Halliburton Foundation, and the Triumph Group Foundation.

› INNOVATION TO REALITY (I2R)

Innovation to Reality (I2R) is an after-school program for 6th-8th graders. Two themed 4-week sessions meet once a week on-campus and culminate in a team-based presentation to parents. Themes were chosen to reflect the Grand Challenges of Engineering and are based on Purdue research. The 2017-18 themes were: Engineering your Everyday World and Space! There were 67 students who participated in at least one of the themes. We once again partnered with an EPICS team to plan and implement the activities for each of the sessions.

Sponsored this year by the Motorola Solutions Foundation, the Halliburton Foundation, and the Triumph Group Foundation.

› INTRODUCE A GIRL TO ENGINEERING DAY (IGED)

Introduce a Girl to Engineering Day (IGED) is an annual daylong event held in February in conjunction with National Engineers' Week. The 9th and 10th grade participants learn about engineering through engaging hands-on activities and interactions with current female engineering students and faculty. Undergraduate and graduate women in engineering volunteer to be a mentor to 2-3 participants or to lead/assist with hands-on activities related to each of the engineering disciplines represented at Purdue. Purdue faculty and staff develop and present activities and female engineers from the IGED sponsor, Caterpillar, share with the participants what it is like to be an engineer making a difference in the world. In addition to attending three hands-on engineering activity sessions of their choice, participants enjoy a lunch in the Purdue dining courts with their mentors. In the morning, we offer a Parent Session with WIEP staff and Caterpillar engineers to present information and answer questions about encouraging their daughters' interest in engineering through appropriate messaging. There were 166 participants in the program this year.

Sponsored this year by the Caterpillar Foundation.

OUTREACH ACTIVITY - FEATURE

04

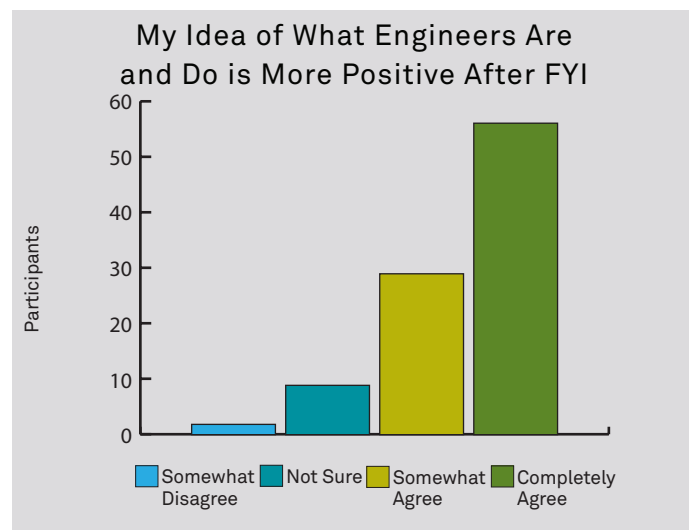
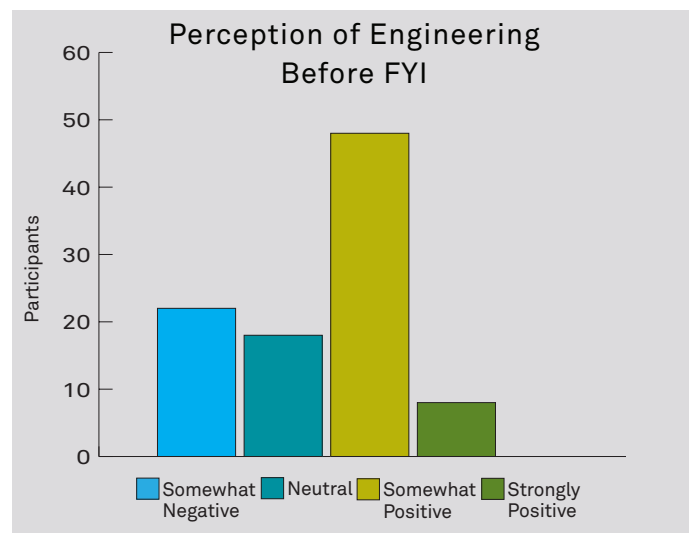
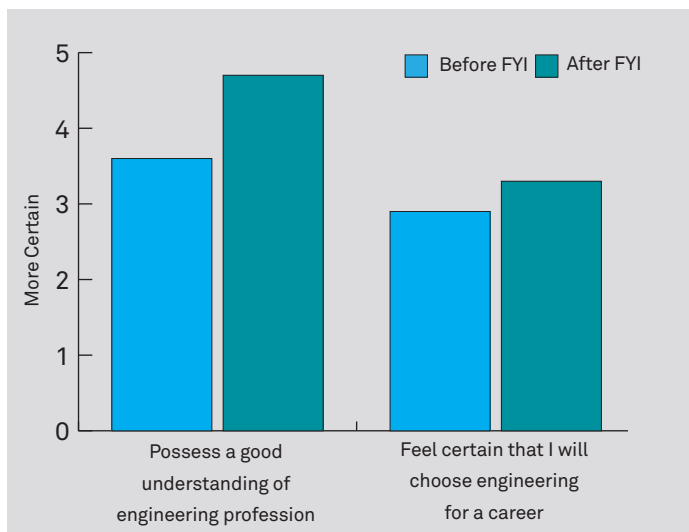
ENGINEERING: FOR YOUR IMAGINATION



Engineering: For Your Imagination (FYI) is a one-day, on-campus summer program to inspire rising 7th – 9th grade students to consider engineering, showing the positive impact that engineers have on people and the world. There were 123 participants who rotated through three hands-on engineering activities facilitated by Purdue Engineering faculty and alums. Current engineering students acted as mentors and role models, facilitating small group interaction, guiding the participants throughout the day, and eating lunch with the participants. Lunch was served in Purdue's newest building, the Wilmeth Active Learning Center, allowing the girls a glimpse into what an active learning environment feels like.

Simultaneous programming offered for parents of FYI participants focused on the role they play in their daughter's STEM education. We gave advice on how to cultivate interest in STEM, introduced appropriate messages to build that interest in STEM, and presented resources with which to help them keep the STEM spark ignited as their daughters travel through junior high and high school.

The day ended with a workshop intended to empower these young women with messages counteracting social and environmental factors they may face, which can have a negative impact on the decision of girls to pursue careers in STEM. When asked what was the best part of the day, one participant responded, "Learning about all the options and positive messages for girls."





EMMY CHOJECKI

*Senior, Mechanical Engineering, Leadership Team, M&M Program
Hometown: Valparaiso, Indiana*

› WHAT INSPIRED YOU TO STUDY ENGINEERING?

I really wanted to find a degree that I felt would help people or better the lives of others. With a degree in mechanical engineering, I am able to combine math and science and creativity to do that.

› WHY DID YOU CHOOSE PURDUE?

I grew up in a Purdue family – my dad, neighbors, and other family members went to Purdue – so I grew up going to football games, watching the band, helping people move in, and being on campus a lot! I chose Purdue because it not only has the big campus atmosphere, but also great academics. It is also in-state for me and has a really good engineering program.

› IF YOU COULD USE THREE WORDS TO DESCRIBE ENGINEERING, WHAT WOULD THEY BE?

Challenging › pushes you past limits you thought you had, outside of your comfort zone, able to solve problems you never thought you could

Rewarding › job opportunities, completing classes you didn't think you could – I did that!

Collaborative › always work in groups, so much more fun with other people, can actually get stuff done with others, get others' perspectives with other approaches

› WHERE DO YOU THINK YOUR PURDUE ENGINEERING DEGREE WILL TAKE YOU?

Anywhere! It's pretty exciting because there are opportunities in every field. I'm interested in working with consumer products and things people interact with. As I mentioned earlier, I want to do something that enhances the lives of others and it is exciting to know that my degree can help me to get there.



design life. **engineer.**



ABHI MISHRA

Senior, Multidisciplinary Engineering, Operations Leadership Team

Hometown: Evansville, Indiana

› WHAT INSPIRED YOU TO STUDY ENGINEERING?

I actually wasn't planning on being an engineer. My dad is a chemical engineer and it scared me away from engineering – he is so good at it – I didn't think I could be as good. When it came time to decide my senior year of high school what I wanted to study, I knew that I wanted to go to medical school and felt that engineering was the best route to take. Engineering combines all sorts of majors – it's a little bit of everything, and could help me become the most well-rounded person that would be able to approach any problem, analyze it, and solve it rationally.

› WHAT IS YOUR FAVORITE ASPECT OF ENGINEERING?

There is something for everyone. You don't have to be good at math and science to be an engineer – it helps, but it's not necessary. There is such a variety of interests that you can pursue with engineering.

› WHERE DO YOU THINK YOUR PURDUE ENGINEERING DEGREE WILL TAKE YOU?

I see my Purdue Engineering degree taking me through medical school to get my MD PhD. I feel confident pursuing anything after my time at Purdue. I gained so many skills and I feel as though I am well-rounded after my time in the engineering program – it has really prepared me for anything!

› WHAT IS YOUR DREAM JOB?

My dream job is to become an innovative surgeon. I want to do research and test it out in the field. My dream is to have the capacity to research new scientific and mechanical theories in medicine and see them in action.



WE Link

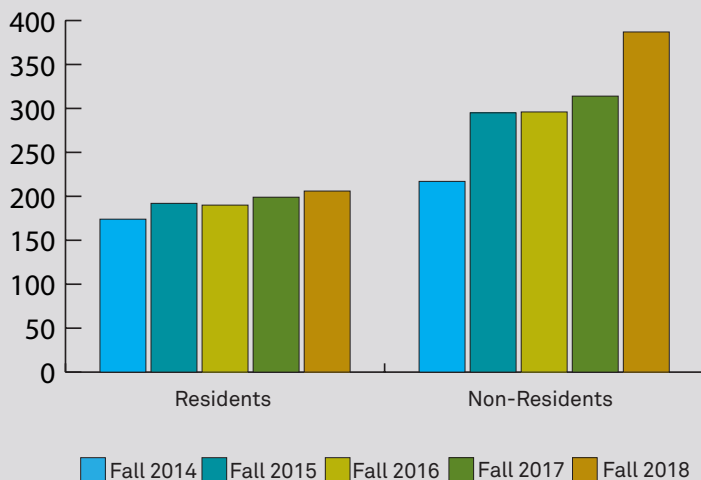
The WE Link Leadership Team, made up of undergraduate engineering students, aims to reach out to prospective female engineering students in high school and to serve as their connection to Purdue. WE Link focuses on activities that help young women interested in engineering learn more about life as a female engineering student at Purdue by discussing residential hall life, typical classes for engineering students, internships, co-ops, study abroad, and other experiences Purdue students have. The team curates a blog for prospective students to learn more about the engineering experience at Purdue (www.purduewiep.blogspot.com), a Twitter account (@PurdueWIEP - follow us!), and an Instagram account (@purduewiep). Admitted students also received a handwritten postcard from a current student.

Sponsored this year by Deere & Co. and the General Motors Foundation.

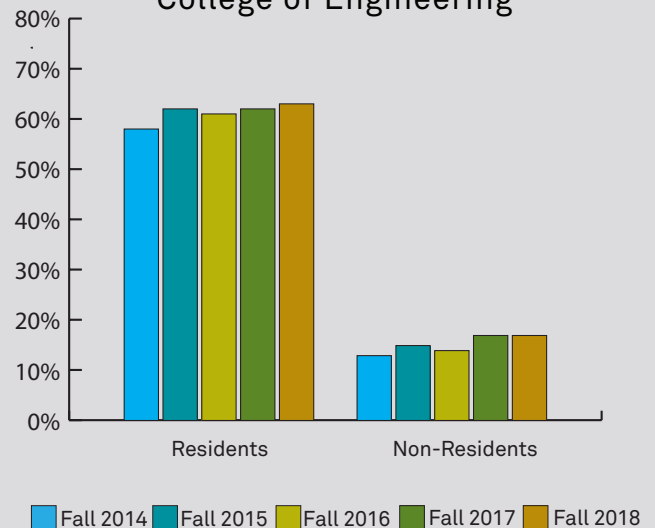


Meet the WE Link Leadership Team Fall 2017 - Spring 2018
Front row (left to right): Abby, Megan, Marisa
Back row (left to right): Brittany, LilyAnn, Allison

Enrollments of New Beginner Women in Engineering



Yield of Admitted Women into the College of Engineering



The data shows that the number of both Indiana residents and domestic non-residents have increased over the last five years. (The WE Link team does not focus on international student recruitment, as there are significant other factors involved in recruiting students from other countries (e.g. visa attainment, etc.)). The data also shows that the yield rate — the percent of admitted students who enroll — has been increasing slightly over the last five years.

WE Link



BRITTANY ALLEN

Major: Industrial Engineering
Hometown: South Elgin, Illinois
 Brittany is a co-chair of the WE Link Recruitment Project Committee, a group of volunteers who work on projects for recruitment. Besides WE Link, she is involved with Delta Gamma Fraternity and the EPICS Learning Community. In her free time, Brittany enjoys spending time with family and friends, dancing, and listening to music.



LILYANN PETERSON-GAPINSKI

Major: Industrial Engineering
Hometown: Mendota Heights, Minnesota
 LilyAnn is in charge of the newsletter for WE Link. She has been involved with the Honors Engineering Learning Community, Purdue Society of Women Engineers (PSWE), Boiler Gold Rush, and the Purdue Co-Op program. In her free time, LilyAnn enjoys hiking, traveling, and fitness.



MARISA HUGHES

Major: Biomedical Engineering
Hometown: Brownsburg, Indiana
 Marisa is a co-chair of the Recruitment Project Committee of WE Link, a group of volunteers who work on projects for recruitment. In addition to WE Link, Marisa is an active member of Alpha Xi Delta Sorority, Engineering World Health, and Purdue Catholic Students (PCS). She spent the last year on a co-op with Zimmer Biomet studying abroad in Siena, Italy in the summer. In her free time, Marisa enjoys working out at the co-op and spending time with friends.



MEGAN TANDARICH

Major: Mechanical Engineering
Hometown: Kennett Square, Pennsylvania
 Megan is a co-chair of the volunteers of WE Link. Along with WE Link, Megan is involved in Phi Mu Sorority, Mechanical Engineering Ambassadors, Purdue Ski and Snowboard club, and Purdue Society of Women Engineers (PSWE). She has had two internships with P&G. While not in class, Megan enjoys hiking, lacrosse, concerts, and hanging out with family and friends.



ALLISON MEYER

Major: Mechanical Engineering
Hometown: Raleigh, North Carolina
 Allison is in charge of the social media and blogs for WE Link. In addition to WE Link, Allison is a Mechanical Engineering Ambassador, WIEP M&M mentor, a member of the Paint Crew, and is President of Phi Sigma Rho Engineering Sorority. She has had three engineering internships working in manufacturing: Freudenberg Performance Materials after her freshman year, and Honda Manufacturing of Indiana for the two subsequent summers. In her free time, she enjoys photography, traveling, and loves to play and watch sports.



ABBY TRUSLER

Major: Industrial Engineering
Hometown: Fishers, Indiana
 Abby is a co-chair of the WE Link volunteers. She has been involved in Kappa Alpha Theta Sorority, Institute of Industrial Engineers, intramural sports, and the Purdue Ski and Snowboard club. She spent the 2016-17 year interning at Disney and studying abroad in Australia. She has also had internships with Accenture and Deloitte. In her free time, Abby enjoys all things outdoors: hiking, water skiing, snowboarding, traveling, exploring, running, and playing sports.



› ACCESS ALUM

Access Alum is an initiative in which we offer alums planning to come to campus an opportunity to have informal chats with our undergraduate and graduate women in engineering. The 1.5- 2 hour sessions are intended for students to network with alums, ask questions, have a resume reviewed, and learn more about industry, government, and academic positions. Twenty-eight alums and 440 students took advantage of the opportunity this year.

Sponsored this year by Bechtel Corporation.



› ENGR 194, WOMEN IN ENGINEERING SEMINAR

First year students can choose to take this one-credit course which utilizes dynamic alumnae to inspire, motivate, and reinforce the students' career choices. Students hear presentations from a variety of engineering alumnae who talk about their career choices, their daily routines on the job, and their challenges and successes in their professions as well as in their personal lives. Speakers range from recent graduates to well established corporate executives. The seminar speakers act as energizing role models, and through a series of lunches with the speakers and small group discussions, students learn networking skills. There were 185 students in the Fall 2017 class.

Sponsored this year by Deere & Co., the General Motors Foundation, and the Halliburton Foundation.

› ENGR 494, GENDER IN THE WORKPLACE

This course, developed and first offered by WIEP in the 2015 spring semester, provides junior and senior engineering students an opportunity to maximize their earning potential, promotion opportunities, and retention within engineering. The goals



for the course are for students to become aware of and discuss solutions for internal and external barriers which can prevent women from reaching their greatest potential in the workforce; enhance professional development and transition skills required to move successfully from an academic to professional environment; and acquire skills and knowledge to serve as engineering role models and ambassadors. The class meets weekly in a small-group discussion format. This year, an Executive in Residence (EIR) was added to the course. The addition of an EIR, a highly accomplished industry leader, enhanced the classroom discussion by sharing real-life situations and brainstorming resolutions. The EIR attended class 4 times during the semester where she led class discussion around the topics the students had read and discussed. There were 13 students in the spring 2018 class.

Sponsored this year by the Martinson Family Foundation.

› WIEP RESIDENTIAL PROGRAM

First-year women majoring in engineering can choose to live on one of the designated engineering floors in Earhart Hall or Shreve Hall. The students who live on the engineering floors have access to female engineering mentors on an informal basis, who provide them with support and encouragement. Since engineering students share a common first-year curriculum, the women on the engineering floors are easily able to form study groups and social networks. Many of the resident assistants assigned to the engineering floors are engineering students themselves, and are able to relate to the residents academically as well as socially. In addition, the WIEP-WISP (Women in Science Program) tutoring center is located in Shreve Hall for the convenience of the students who live there. Participants in the WIEP Residential Program can also participate in other Purdue Engineering learning communities if the residency requirement is co-located or optional, and many of them do so. This year, 201 students lived in the WIEP Residential Program.



➤ GRADUATE WOMEN IN ENGINEERING NETWORK (GWEN)

The Graduate Women in Engineering Network is designed to provide strategies within a supportive community for women engineering graduate students to advance personally, academically, and professionally. The program objectives are:

- to establish an exclusive network that affirms, inspires, and supports women and gender minorities throughout the engineering graduate career,
- to provide opportunities to develop skills and introduce strategies for professional and personal development, and
- to provide an enriching experience that encourages individual growth and furthers the community of women engineers.

To acknowledge these core objectives, GWEN uses monthly meetings that cover a range of topics to address personal and professional development.

➤ WIEP-WISP TUTORING CENTER

A free tutoring service for first-year classes, co-hosted by the Women in Engineering Program and the Women in Science Program (WISP), is offered on a walk-in basis. Women who are upperclassmen science and engineering majors are employed and trained as tutors. In addition to providing homework help, the tutors are seen as mentors and role models. The tutoring service is located in Shreve Hall in the University Residences Support Center for the convenience of the women who live on the engineering floors there, but is open to all students, regardless of residence.

The 2017-18 academic year was the 21st year of the program. For the year, 353 students used the center 1,117 different times. About 72% of the students who used the center this year were women. Math was by far the most tutored subject, with 78% of visits focusing on math tutoring.

Sponsored this year by the General Motors Foundation and Phillips 66.

Graduate Women in Engineering Network Leadership Team



Left to right: Sumra Bari (PhD ECE), Nelyan Lopez-Perez (PhD MSE), Beata Johnson (PhD ENE), Sara Lyons (PhD ME), Juliana Pereira (PhD CE), & Valeria Andreoli (PhD ME).

GWEN
GRADUATE WOMEN IN ENGINEERING NETWORK
COMMUNITY • STRATEGIES • ADVANCEMENT



NEYLAN LOPEZ-PEREZ

PhD Student

Materials Engineering

Leadership Team, GWEN

Hometown: Vega Baja, Puerto Rico

› WHAT INSPIRED YOU TO STUDY ENGINEERING?

It was a really long process. I started my BA in Journalism at the University of Puerto Rico, but I missed math! So I switched to physics. While I was getting my BS, I had the opportunity to do internships and complete research in Germany and at Purdue. While at Purdue, my research was on polymers. I loved Purdue and studying materials, so I decided to go to Purdue to pursue a PhD in Materials Science Engineering.

› WHY DID YOU CHOOSE PURDUE?

I chose Purdue because it has a really good program with a reputation that speaks for itself. Plus, I had previous experience doing research with Purdue and really liked it!

› WHAT IS YOUR FAVORITE ASPECT OF ENGINEERING?

I love that it involves a lot of creativity! People think that being creative is just for the arts and writing, but it is necessary in engineering. It takes creativity to think and make small changes – engineering is not as objective as it seems.

› WHAT STUDENT ORGANIZATIONS ARE YOU A PART OF? HOW HAVE THEY HELPED YOU?

I am currently President of the Materials Science and Engineering Graduate Student Association (MSEGS). I am also on the leadership team for the WIEP Graduate Women in Engineering Network (GWEN). Being a part of these organizations have helped me develop skills that I don't always use when studying engineering.

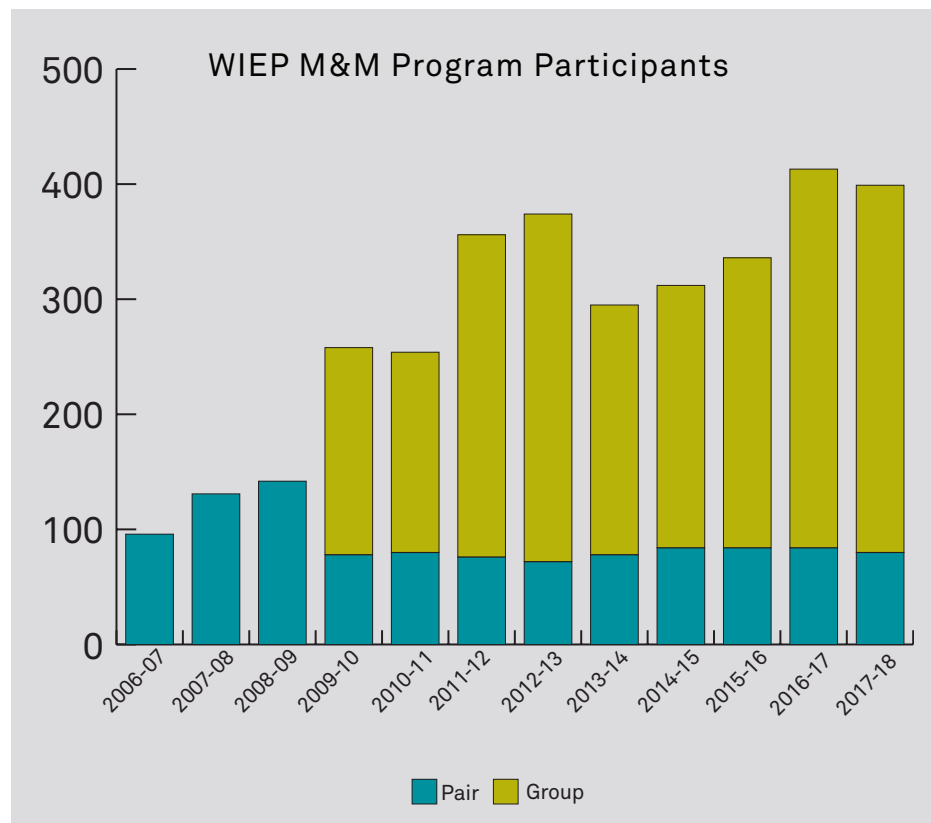
› WHERE DO YOU THINK YOUR PURDUE ENGINEERING DEGREE WILL TAKE YOU?

I've seen so many great people come out of Purdue! I have no idea where it will take me! Probably industry, but hopefully policy. I would love to work for the UN – improving other countries and finding a way to exchange science knowledge between countries – that's the ideal job.



M&M: Mentors & Mentees, Undergraduate Mentoring Program

The Women in Engineering Mentees & Mentors (M&M) Program began in 1992 and has since impacted thousands of female undergraduate engineering students. M&M is designed to provide support, affirmation, and helpful strategies to the participants through dynamic and nurturing programming. The goals of the program are three-fold: (1) to enhance personal support of students through contacts with female role models and an interactive, mutually-beneficial peer mentoring program, (2) to build confidence in students through affirmation of their skills and values, and (3) to share effective strategies that enable students to thrive in college, leading to successful completion of their engineering education and preparing them for future endeavors. The M&M Pair Program matches incoming students with an upperclass student for one-on-one mentoring. The M&M Group Program is designed around a network-mentoring model in which individuals take on the role of mentor depending upon their knowledge of and experiences with a particular situation, regardless of age or time at Purdue.



Both the Pair and Group programs are led by a leadership team of 5 – 7 undergraduate students. These teams plan monthly dinner meetings designed to address each of the program goals. Monthly meetings include hosting a guest speaker to conduct an interactive workshop focused on building success strategies, coupled with a targeted large-group networking activity and a nurturing small-group mentoring activity. The leadership team also offers a monthly social activity to encourage all participants to build their networks and take a break from their studies.

The Pair Program is intentionally kept to 48 – 60 mentoring Pairs. This allows us to focus on one-on-one mentoring techniques and developing strong relationships. The mentoring Pairs are encouraged to meet weekly to continue to grow their relationship. In contrast to the Pair program, the Group program can accommodate several hundred students and these women each bring their unique experiences which creates a rich network-mentoring setting. In response to participants' desire to get to know one another on

a more personal level, a Small Groups program was developed. These small groups of 8 – 12 participants meet monthly for relationship building and mentoring.

The M&M Program offers a strong community of female engineering students that help one another succeed. The participants feel strongly that the M&M Programs have positively impacted their engineering experiences. The M&M program serves as a crucial resource for its participants, not only assisting them in their undergraduate academic years but also equipping them for professional success in their future endeavors.

ALUMS & FRIENDS

TOTAL GIFT ABOVE \$10,000

Chris and Susan Burke
 Juan Ernesto de Bedout
 John and Francesca
 Edwardson
 Harold and Debbie Force
 Paul and Elizabeth
 Hommert
 John and Polly La Duc
 John H. Martinson
 Shirley and John McCarty
 Patti and Eric Poppe

TOTAL GIFT OF \$5,000-\$9,999

Barbara B. Haney
 Leah Jamieson and
 George Adams
 Irene and Douglas King
 David and Emily Liggett
 Boon Lock Yeo and
 Minerva Yeung

TOTAL GIFT OF \$1,000-\$4,999

Keith and Linda Andress
 Allison Bahnsen-Bolinger
 and Jeremy Bolinger
 Susie and Steve Baranyk
 Dianne Beever and
 Phong Do
 John and Faye Bevelhimer
 David and Cynthia Bradley
 Abigail S. Brown
 Christine L. Browning
 Mark and Susan Burden
 Jane C. Daniels
 Patricia Davies

Sara and Joseph Evans
 Ann and Alan Fagan
 Renee S. Fieldhouse
 Tom and Erica Gallant
 Janet and Scott Goings
 Jennifer and George Graves
 Steve and Charlotte Gray
 Abbie Griffin and
 Ken Schreiner
 Nancy and Eric Hanson
 Beth and Eric Holloway
 Nancy and William Huber
 Tom and Susan Insley
 Stacey Kacek and
 Daniel Whitty
 Shanta and James Keeven
 Carrie and Brian Kendrick
 Akshay D. Kothari
 Rosemary and Pierre
 Lafrance
 Jerry L. Lockenour
 Rachel K. Mace
 Donna and Paul Marvel
 Bill and Julianne McClung
 Sandy Postel
 John L. Rich
 Kathryn and Jose Rivera
 Ronna F. Robertson
 Daryl A. Robertson
 Mark and Melanie Rubino
 Samantha A. Sanders
 Nancy L. Sarkisian
 Dick and Judy Schubert
 David and Rhonda
 Sherwood
 Jose S. Sinibaldi
 Bob and Mary Strickler

Karen A. Sutor
 Margo H. Tschirky
 Bob and Sally Weist
 Michael and Alyssa Wilcox
 Anne and Jim Wilson
 Mary Ann Zimmerman

TOTAL GIFT OF \$500-\$999

Caitlin J. Adams
 Marcy and Ted Alstott
 Okan Azmak
 Anil and Renu Bajaj
 Chris Barman
 Frank and Mary Barrett
 Connie and Craig Bentzen
 Ann M. Bieneman
 Linda Blevins and
 Gregory Fiechtner
 Ken Bolvin
 Linda and Keith Brennan
 Heather L. Cooper
 Sarah Corbin and
 Paul Steuer
 Rhonda S. Crum
 Kristen and Oron Daihes
 Melissa J. Davies
 Edward J. Delery
 Anthony and Rhonda
 Denhart
 Jeanne M. Edwards
 Mary Anna Feitler
 Lori and Chuck Fraleigh
 Darrel B. Fujimoto
 Patricia Galloway
 Debbie Jones
 Insung and Eunhee Kang
 Liz and Dave Klimes

Klod and Kathy Kokini
 Harvey and Barb Lee
 Craig and Kristin Leese
 Kimberly M. Levine
 Rose Long and Tom
 Maliszewski
 Jacob and Kathleen Macke
 Sudhakar Mamillapalli
 Jim and Sandy Marek
 Mithran and Anita Mathew
 Theresa E. Matthews
 Kendra and Andrew
 Mattison
 Timothy M. Mattix
 Chris Maziar
 Andrea and Kevin McGrath
 Anne E. McLaren
 Pamela McVeigh and
 Raymond Hertel
 Bob and Terri Metcalf
 Mary Lee Miller and
 Kate Mason
 Anne Marie Mills
 Bill Oakes
 Kristin M. Peter
 Julie and Ray Plagens
 Mary Quinn
 Rick Randjelovic
 Deiadre L. Rauch
 Marisela Reyes
 Gerald T. Richards
 Bumjin Song and Soo Kim
 Ann M. Stauch
 Jack Stauffer
 Brian and Katy Stutts
 Sonia A. Teran
 Doug and Susanne Upshaw

ALUMS & FRIENDS

TOTAL GIFT OF \$500-\$999 (CONT'D)

Susan L. Woodling
Erin A. Youngs

TOTAL GIFT OF \$101-\$499

Sue Abreu
Ralph E. Amos
David and Daniele Anderson
Rex R. Anderson
Lorel and Roger Au
David and Holly Aulen
Susan and Steven Aurand
Robert E. Averitt
Ashley and Kyle Babcock
Lee Baker
Greg and Teresa Barnett
Larry A. Beehler
Paul C. Begeman
Theodore Birky and
Katy Kindig-Birky
Melissa and Matthew
Bissett
Rhonda R. Bledsoe
Bill Bray
Harry Burgos
Michelle N. Burke
Caley A. Burke
David A. Burkhart
Theresa C. Carter
Julie and Bruce Cassady
Thomas Castelli
Kristen J. Cavanaugh
Cuiye Chen and Wei Zhao
Celeste and Chuck Chippero
Tammy Christen

Jennifer and Paul
Christensen
Renaë and Andrew
Christianson
Ellen and Lawrence Coan
Carol and Philip Corbeels
Madonna Cornelissen and
Edward Andrewlavage
Michael B. Cortez
Douglas and Cathy Costelle
Gary and Lynn Cummings
Nita L. Cunningham
Terry and Cathie Dager
Rod and Martha Daniels
Phil and Linda Davis
Thomas and Mary De Vries
Nancy Deaton and
Hiam Garner
Mindy M. Dempsey
Dick DePoy
Weiyang Ding and
Junxiao He
Don Drapeau and
Betty Folliard
Duane M. Durkos
Mark S. Engstrom
Robert and Mary Essig
Susan J. Feulner
Ukari O. Figs
Randall Fleenor and Debe
Campos-Fleenor
Jim Flinn
Ryan P. Foley
Liz and Scott Fortman
Franklin and Linda Fountain
Roger and Diana Fowee
Katherine M. Frangos

Vicky and Robert Fransham
Steve and Becky
Fredrickson
Steve and Kuk Frey
Keith and Marcia Garvens
Tom and Sue Gaynor
Ralph and Josephine Gilbert
Cassandra M. Gouger
Kathy and Doug Greenhill
Kelli and Chad Grothen
Nishi Gupta
Dave and Karen Haller
Mark and Susan Henderson
Shelly Hoenert
Mara Howell and
Jonathan Monks
Win M. Htay
Jim Huff
Eric A. Hutchison
Edward D. Ingold
Joan and Kenneth Isman
Laura Jacumin
Julie A. Jagoda
Ken Jarosch
Don P. Johnson
Jo Kahl
Steven and Linda Karpyak
Ann Marie Kenitzer
Rod Kindler
Racheal E. Koontz
Joe and Sue Kovich
Hallie Kutchin-Wasserman
and Yuval Wasserman
Mike and Vicki Laird
Don Larson
Milly Lierman
Heather J. Light

Marny Livingston
and Ron Large
Al and Janet Lucas
Scott R. Makela
William and Sharon
McDowell
Ron McHenry
Bob Meese
Joseph and Susan Messina
Jeri L. Metzger
Sue Millard
Andrew J. Mills
Charity and David Monroe
Sheila L. Murphy
Raymond W. Nettleton
Tim and Nancy Ortman
Francisco A. Pagan-Moreno
Andy and Denise Pajakowski
Heidi A. Peterson
Janet M. Platt
Al and Teresa Plummer
Edith A. Probus
Jane Quirk and
Steven Barnes
Gale Rahmoeller
Russ Rausch and Beth
Lee-Rausch
William T. Reid
Warren E. Rich
Nancy M. Ridenour
Amy M. Ritter
Dianne and Bob Rodenbeck
Dick and Deborah Roski
Bob Roth and
Christine Blanck
Joe and Sharon Russell
Phil and Denny Sanders

ALUMS & FRIENDS

TOTAL GIFT OF \$101-\$499 (CONT'D)

Mark and Carolyn Schneider
Tom Shideler
Jacqueline and
William Smith
Jeff Smith
Mary and Doug Smith
Mark and Doris Southerland
Austin and Martha Spang
Jill E. Speizer
Mitch and Corby Springer
Sheri and Ryan Stark
Gary and Stacey Stenerson
Rick Stickles
Leslie J. Sullivan
Todd L. Summe
Brian J. Thomeczek
Kristin L. Thunhorst
Dana S. Tiller
Joseph R. Trager
Tom and Mary
Elizabeth Trzaska
Helen U. Uhrig
Phil Valent
Rinda and John Vas
William A. Vendramin
William Venners
Gene and Virginia Voelkel
Linda Wang and
Elias Franes
Tiffany and Jeff White
Karla J. Whitley
Kevin L. Wible
Laura D. Williams
Clifton and Marilyn Wilson
Alice J. Wilson

Ralph and Barbara Winters
Harry K. Winters
Robin Wippich-Dienhart
and Tom Dienhart
Connie Wong
Scott A. Woods
Fe and Michael Yako
Fan Zhang

TOTAL GIFT OF UP TO \$100

Adriana Aguilar
Stu Allen
Sharon and Joseph Amlung
Nancy L. Anderson
Vanessa and Michael Arvay
Tony Asoera
Jessica A. Avitia
Chris and Renee Ayers
John Baez
Norman B. Baffer
Madalina and
Benjamin Baker
Charles and Pamela Ball
Kimberly D. Ballew
Steven and Kathie Balser
Bruce and Jane Barger
Sean Barnett
Patrick J. Barrett
Joan Barriage
Wendy R. Barrott
Allison and Brock Barry
Katherine E. Bass
Suzanne and Charles Bast
Gerry and Gale Bay
Robert L. Bayt
Beamo Beamish
Dylan A. Becker
Stephen B. Beirne

Karen and Gregory Bender
Rebecca A. Bernard
Ted Black
Brad Bolster
Alan Borken
Kathleen P. Bors
Peg Bowden
Michael and Jennifer Boyle
Becky Branson
Dave and Betty Breedlove
Tony Brobst
Jessica A. Brochtrup
Adrian Buganza Tepole
Scott T. Bunosky
Joseph and Jane Burge
Andy Burke
Stephen E. Burton
Natascha T. Buswell
Hilary A. Butler
Martha J. Butwin
Kevin and Sandy Byers
Rodolfo R. Canales
Barry J. Carlson
Jan and Kevin Carnes
Norm Carnow
Chuck and Cheryl Carson
William and Shirley
Chappell
Ce Chen
Jen and Chih-Tsai Chen
Chi and Wanda Chen
Elizabeth A. Chilcoat
Steven and Victoria
Chivington
Lindsay E. Clegg
Deborah E. Cohen
In Honor of Ray and
Lila Cohen

David M. Collins
Randy and Catherine Collins
Fred and Judith Conger
Steven and Jennifer
Coopridner
Anna Corbett
Jack and Nedra Crane
Larry D. Crawford
Christine and David
Crockett
Lance M. Croxall
Terry and Suze Cutshall
Harish Dadoo
Gerald S. Dame
Supriyo and Anuradha Datta
Christine Davenport
Heather M. Davis
Meredith R. Deneweth
Tricia A. Dennis
Karen and Jeff Dickmann
Robert M. Diebold
Crystal and James Doty
Michael T. Dunlap
Tiffany A. Dux
Jeff Eckdhal
Charlene Edinboro
Alynn and Randall Eggert
David and Janet Ellert
Curt A. Elpers
Colleen and Scott Emery
Joseph M. Ernst
William L. Ernst
Sinan Erten
Julie and Robert Erwin
Carol S. Fahey
Tina Farley
Charlie and Helen Fender
Sarah A. Ferguson

ALUMS & FRIENDS

TOTAL GIFT OF UP TO \$100 (CONT'D)

Philip A. Fistori
Charles and Gretchen
Fleischer
Dustin J. Fox
David W. Fraley
David and Barbara French
Sue Fuglem
Varsha Ganapathy
Manasa Ganoothula
Dhruv Garg
Brianne M. Garness
Alison M. Gatons
Jim and Peggy Gearhart
Dick Gebben
Mike and Andrea Gilkey
David and Pamela Gobran
Anne M. Godfrey
Allison Goodwell
and Sean Britt
Amy Goss
Barbara and Geoffrey Grant
Michael A. Greenberg
Krista M. Griffin
Linda F. Gudeman
Lisa K. Hackney
Melissa A. Hain
Jon and Julie Hancher
Rebekah D. Hanewinkel
John E. Haney
Marilyn K. Hanover
Lisa and David Harding
Anne and Mark Hartigan
James G. Haunty
Paul M. Haydock
Robert and Ann Heeter

Stacey L. Henkel
Carl L. Henry
John and Melanie Herber
Phil Hess
Ipek and Corey Hill
David and Tabatha Hill
Marc R. Hogan
Sam Hollingsworth
Jennifer and Ryan Holohan
Dana C. Hook
Dave and Nancy Hook
Brett D. Hoppie
Edward and Kathleen
Howell
Clayton A. Huben
Debbie Hudgens
Lisa M. Hudgins
Landis M. Huffman
Steven A. Hughes
Kelly L. Hummel
Curt A. Hurst
Jerry E. Hyland
Kevin G. Iverson
Niki Johannigman
Bob and Ann Johnson
Alison R. Jonkman
Tom Kafoure
Diana Karas
Devin and Jessica Keeler
Gregg D. Kemper
Nathanial C. Kempfert
Suzanne R. Kennedy
Janee and Nick Kile
Kathy and Rhett Kilmer
Jim Kinder
Sherry L. King
Lorraine Kisselburgh and
Howard Zelaznik

Monica and Jarod Klaas
Kathryn and Steven Kohout
Wynne E. Kontos
Jerry J. Kosner
Rick Kovener
Candee and Peter
Krautkramer
Paul A. Kuban
Bradley K. LaGue
Peter and Esther Lamuren
Elena B. Langlois
Al Lao
Melissa and Nicholas
Lavella
David Lazarus
David L. Lentz
Amy and Dave Lester
Matthew A. Leveron
Chunsu Li and Tai-Chi Su
Mulan Li and Yufeng Zheng
MaryCarol Liethen
Bets Lillo and Raymond
Bukszar
Andrew R. Lincoln
Jerald K. Lo
Andrew R. Lobo
Mark W. Lorah
James F. Lottes
Bev Lotz
Ellen J. Lurie
Samantha A. Mader
Dale and Anne Mallett
Michael B. Mantyla
Thomas A. Manz
Michelle Maranowski
Greg and Lorie Marquez
Douglas and Nancy
Marshall

Savannah N. Marstall
Stephen and Tina Martin
Tony Mathew
Dick and Joyce Mathias
Nichole R. Mattson
Gregory T. Maxwell
Maureen McCarthy
Kerri L. McCool
Jordyn K. McCord
Mike McCord
Ronald D. McCormick
Michelle and Michael
McGinley
Anna-Maria McGowan
Walt McIndoo
Cheryl L. McLean
Kimberly L. Merriman
Bob and Rosie Metzger
Howie and Cate Meyerson
Gary and Janet Micheel
Dawn and Dan Mikels
Mary and Barry Miller
Jenny and Matt Miller
Al and Eugenia Mindlin
Richard L. Moll
Kevin B. Moore
Mary A. Moore
Tamara and Jason Moore
Angi Moots
Melissa and Daniel Moran
Philip and Cheri Moreira
Helen A. Morlock
Chloe C. Morrical
Gina T. Morris
Jim and Janet Morrone
Mary E. Mosier
John R. Mowry
Rebecca A. Muenich

ALUMS & FRIENDS

TOTAL GIFT OF UP TO \$100 (CONT'D)

Jayson C. Munoz
Robert Murdock
Stephen J. Musick
Susie Narkis
Donald F. Neill
Greg Nelson
Jodi Neuwirth
Wesley Nicholson
Bill Norman
Beth and Kevin Nunning
Clark and Kimberly Nylin
Margaret O'Connor
and Wayne Hasz
Erin M. O'Donnell
Dick Offhaus
Oluwaseyi Ogebule
Euridice A. Oware
Jay R. Paige
Kristin L. Palecek
Annette and Kevin Parsons
Lee R. Partin
Rushi B. Patel
Samar J. Patel
Courtney E. Pavletic
Faith W. Pearson
Nicholas L. Pearson
Lori G. Pence
Carolyn Percifield
Richard L. Peters
Chrysa P. Phoraris
Barbara Pickett
and David Gill
Stevan E. Plote
Mathew P. Polek
Nicole M. Poncelet

William P. Posey
Susan M. Pressman
Randy R. Price
Susan D. Pritchard
Jan and Munther Qubain
Tammy and Nicolaus
Radford
Anuradha Ramanath
Vishal Ramani
Aneesh K. Ramaswamy
Supriya Ramesh
Travis S. Ramp
Lois S. Raphael
Samitha N. Reddy
Tom and Gulnur Reinhart
Keith and Sara Reisinger
James N. Remich
Timothy J. Renner
Kelley A. Rich
James A. Richards
Lucy M. Richardson
Scott and Veronica Rife
John P. Roberson
Betty and Bruce Robert
Bill Roberts
Ron Rogers
Vicki L. Rothhaar
Paul D. Royer
Jeff Rudolph
In Honor of Ann E. Rundell
Robert R. Rutkowski
Kim and James Rutz
Kristin L. Ruzicka
Tim and Margaret Rytlewski
Andrew and Holly Saik
Bob Salveter
Linda M. Sarros
Gary A. Schafer

Stacey and Matthew
Schafer
Bill and Mary Schatz
Kathryn A. Scheel
Ethel J. Schelly
Don and Teri Schilling
Mary C. Schmitz
Paul W. Schneider
Kevin C. Schoeffel
Devin A. Schroeder
Mariah G. Schroeder
Grace and Drew Schulz
Anne V. Schwartz
Julia and Mike Seiler
Gary Shaffer
Cecelia M. Sharp
Jerry L. Sharp
Cassandra and Theron Shell
James H. Shuppert
Kenneth and Carol Simpson
Pamela K. Sleet
Sandy Smith
Yvonne Smith
Pat and Gary Sorensen
Mary E. Sosa
Jeff and Nikki Sriver
Charles E. Stailey
Jack L. Stark
Lanette and Russell Stath
Robin P. Steel
Edward Steward
Larry and Lois Stover
Martha S. Strong
Joe Strothman
Bryan K. Stroube
Phil and Diana Stutes
Michele and John Stutz
Jonathan J. Su

Bob and Charlene Swaim
Alan W. Swanson
Jack Swantz
Eric and Charlotte Swartz
Wendy and JR Swindol
Angie Szymborski
Jenn and Tom Talavage
James A. Taller
Geoffrey G. Tanner
Jo L. Tarrh
Hadley B. Thomas
Deane and Fancine
Thompson
Ellen Tobias and
Joanna Billiard
Elizabeth J. Tomczak
Linda and Terrence Trumm
Emily S. Tse
Peggy Umphres
Carmen M. Vaughan
Sheela and Mahesh Veerina
Jeffrey J. Vickers
Walter C. Vodrazka
Susan and John VonBampus
Robin M. Waling
Tina H. Walker
Kevin and Beth Walsh
Rhonda and Larry Walthall
Alan L. Warnock
Tara J. Weidner
Andrew A. Weintraut
Jerry L. Welbourn
Ronald A. Wellman
Kristin E. Wellsand
Sheri N. White
Jamie Wiczer
Roger A. Willby
Joyce and Jeffery Williams

ALUMS & FRIENDS**TOTAL GIFT OF UP TO \$100
(CONT'D)**

Dave Wilmer
 Pam Wilson
 Jon Winborne
 Don and Virginia Windler
 Ted and Pam Woerner
 Philip and Betty Wolf
 Andrew T. Wolka
 Angela Wu and
 Robert Kelley
 Hao Ye
 Bill Young
 Karen and Tony Zaderej
 Sherri and Paul Zapinski
 Al Zdilla
 Fengqing Zhu and
 Minghao Qi
 D. Malone Zimmerman

ENDOWMENTS**PROGRAM SUPPORT**

Leah H. Jamieson Women in Engineering Program Endowment Fund
 — supported by alums/friends
 Daniel Kujovich Strategic Initiative Endowment
 — supported by Dan and Sharon Kujovich
 Minerva Yeung & Boon-Lock Yeo Strategic Initiative Endowment
 — supported by Minerva Yeung & Boon-Lock Yeo
 Barbara Haney Strategic Initiative Endowment
 — supported by Barbara Haney
 Levine Isman Strategic Initiative Endowment
 — supported by Joan and Kenneth Isman
 Shirley McCarty Strategic Initiative Endowment
 — supported by Shirley McCarty
 Sandra Postel Strategic Initiative Endowment
 — supported by Sandra Postel
 Arch E. DeMars BSME 1917 Memorial Fund
 — in memory of Arch DeMars
 Women in Engineering Program Endowment
 — supported by alums/friends

SCHOLARSHIP SUPPORT

Women in Engineering Leadership Scholarship
 — supported by Shirley McCarty
 Thomas and Judith Sly Head Scholarship Endowment
 — supported by Thomas Head
 Janice E. Voss Endowed Scholarship
 — supported by family and friends in honor of Janice Voss
 Gleiter Scholarship for Engineering Impact
 — supported by Roberta and John Gleiter
 Lisa A. Wichmann Scholarship
 — supported by Lisa A. Wichmann
 John T. and Polly L. La Duc Scholarship
 — supported by John and Polly La Duc
 Zimmerman Family Award
 — supported by the Zimmerman family, alums, and friends
 Raytheon Endowed Scholarship
 — supported by Raytheon

CORPORATE AND FOUNDATION SUPPORT

\$20,000 AND ABOVE

Edwardson Family Foundation
Fidelity Charitable Gift Fund
General Motors LLC
Halliburton Company

\$10,000 - \$19,900

American Endowment Foundation
Delphi Foundation, Inc
Motorola Solutions Foundation
Northrop Grumman Corporation
Schwab Fund for Charitable Giving

UP TO \$10,000

ArcelorMittal USA Inc.
Bechtel Corporation
Boeing Shared Services Group
Caterpillar Incorporated
Exxon Mobil Corporation
General Mills Inc.
Nucor Steel Mill
Phillips 66 Company
Triumph Group

MATCHING DONATIONS

\$1,000 AND ABOVE

Dell Giving
Deloitte Foundation
ExxonMobil Foundation
General Electric Foundation
IBM International Foundation
Intel Corp.
LinkedIn Matching Gifts Program
Stanley Black & Decker
The Boeing Company Gift
Match/BPAC Program
The Clorox Company
The VF Foundation
United Technologies

UP TO \$500

3M Foundation Inc.
Abbvie Employee Engagement Fund
AIG
American Electric Power
Apple Inc.
BlackRock, Inc.
BorgWarner Foundation
CA Inc.
Cargill, Incorporated
Chevron Matching Employee Funds
Chevron Phillips Chemical Company
Cisco Systems
Daimler Trucks North America
Duke Energy Foundation
Exelon Foundation
Google
Harris Foundation
Intuit
Kimberly-Clark
Kimberly-Clark Foundation
Lockheed Martin Univ MGP
Mentor Graphics Foundation
Motorola Solutions Foundation

UP TO \$500 (CONT'D)

NVIDIA
PWC
Qualcomm Charitable Foundation
Reynolds American Foundation
Salesforce.org
State Farm Co. Foundation
The Walt Disney Company
Foundation
Toyota
Vectren Foundation, Inc.
VMware Foundation
Xerox Corporation U.S.A.

\$500-\$999

Dow Chemical
Eli Lilly & Co. Foundation
Honeywell Int'l Charity Matching
IR Charitable Foundation 130
PepsiCo
Raytheon
Shell Oil Company Foundation
Siemens Energy Inc.
Wells Fargo Educational Matching



**A SPECIAL THANKS TO
OUR CORPORATE DONORS**

Save the Dates
March 22 - 24, 2019

50
years

March
22

Alumnae/Student Networking

March
23

Professional Development
Symposium &
Celebration Dinner

March
24

Alumnae Send-Off

Non-Profit
Organization
U.S. Postage
PAID
Purdue University

Designed by: HMC 2018
EA/EOU

ANNUAL REPORT

2018 | WOMEN

IN ENGINEERING PROGRAM

PURDUE
UNIVERSITY®

Women in Engineering Program

Neil Armstrong Hall of Engineering, Room 1245
701 W. Stadium Avenue
West Lafayette, IN 47907-2045

wiep@purdue.edu

www.purdue.edu/wiep

www.purdue.edu/designlife



design life.*engineer.*